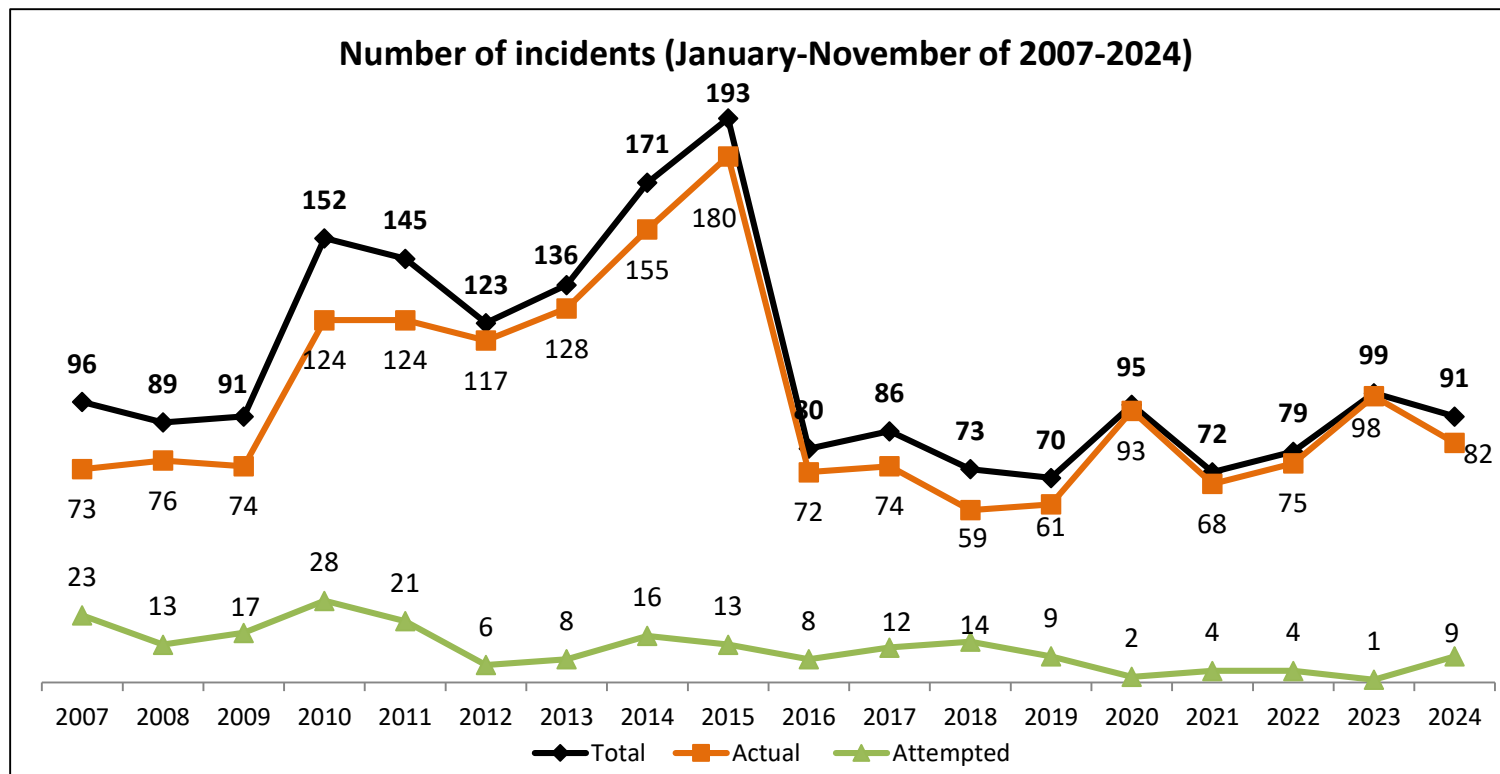


Situation Update (January-November 2024)

1. Number of Incidents

- ❑ **91 incidents** (82 actual & 9 attempted)
- ❑ **Decreased by 8%** compared to January-November 2023 (99 incidents)
- ❑ **One piracy incident** reported (South China Sea)
- ❑ **90 armed robbery/theft** incidents (internal waters, territorial seas & archipelagic waters – coastal States' jurisdiction)

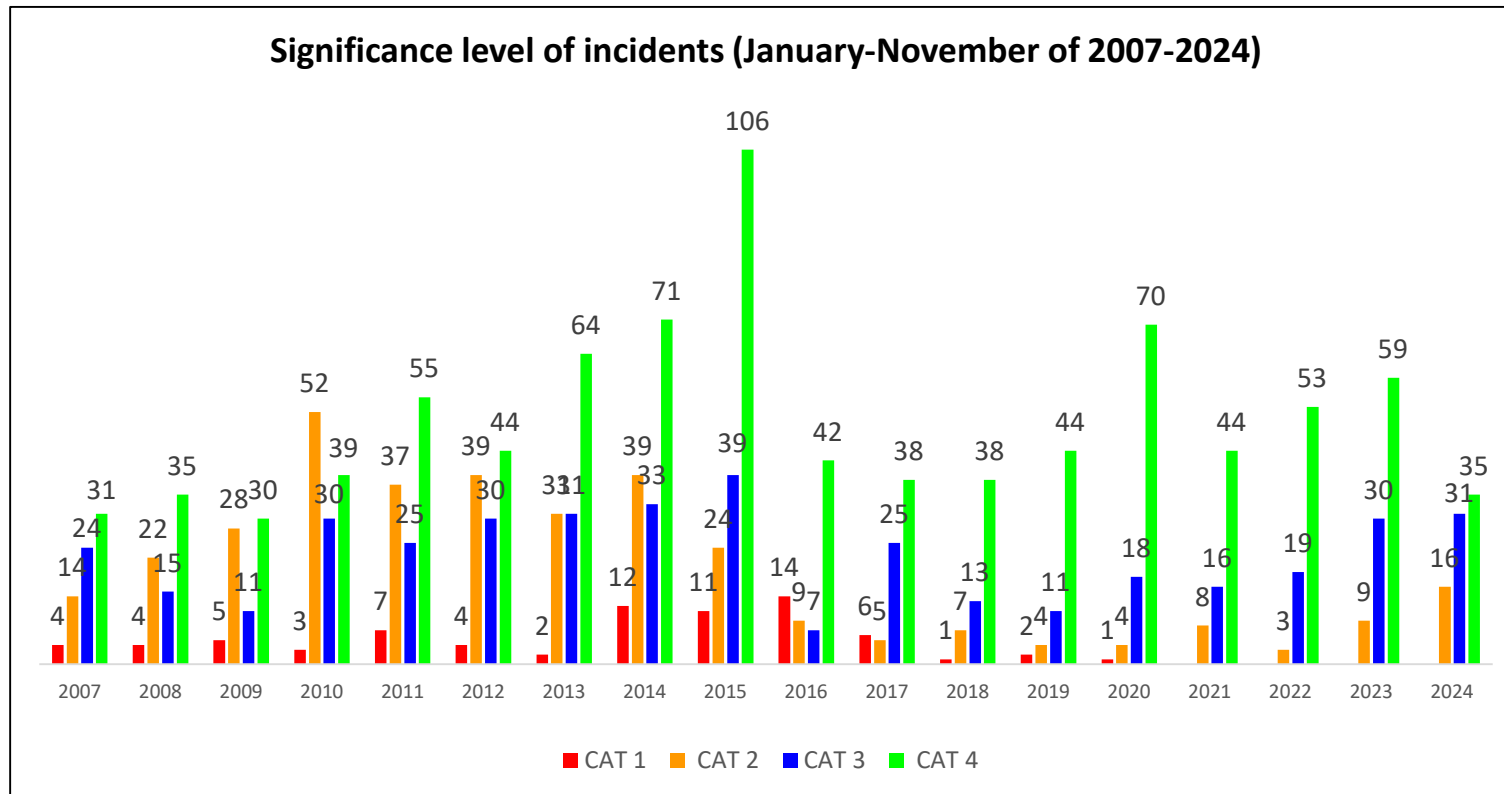


Situation Update (January-November 2024)

2. Severity of Incidents

☐ 82 actual incidents

- No **CAT 1** incident
- 16 x **CAT 2**, 31 x **CAT 3** and 35 x **CAT 4**
- Majority (43%) **CAT 4** incidents (perpetrators not armed & crew not injured)

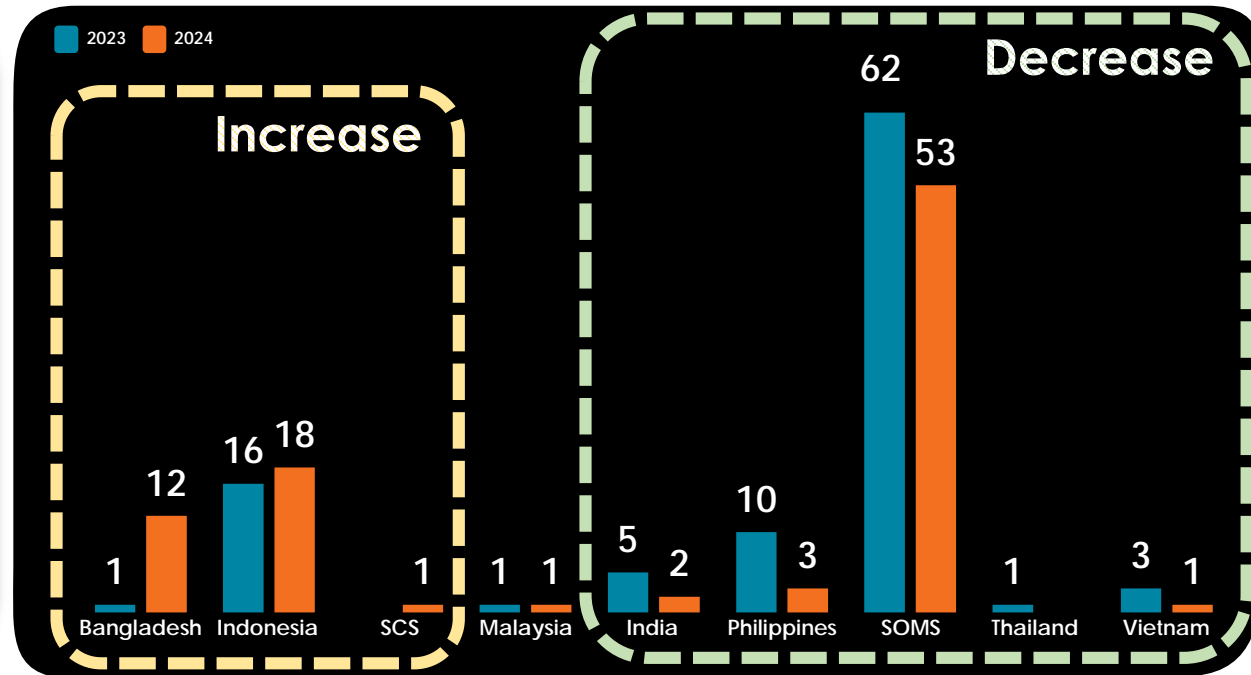


Situation Update (January-November 2024)

3. Location of Incidents

- Straits of Malacca & Singapore (SOMS) (53)
- Indonesia (18)
- Bangladesh (12)
- Philippines (3)
- India (2)
- South China Sea (1)
- Vietnam (1)
- Malaysia (1)

Jan-Nov 2023 Vs Jan-Nov 2024



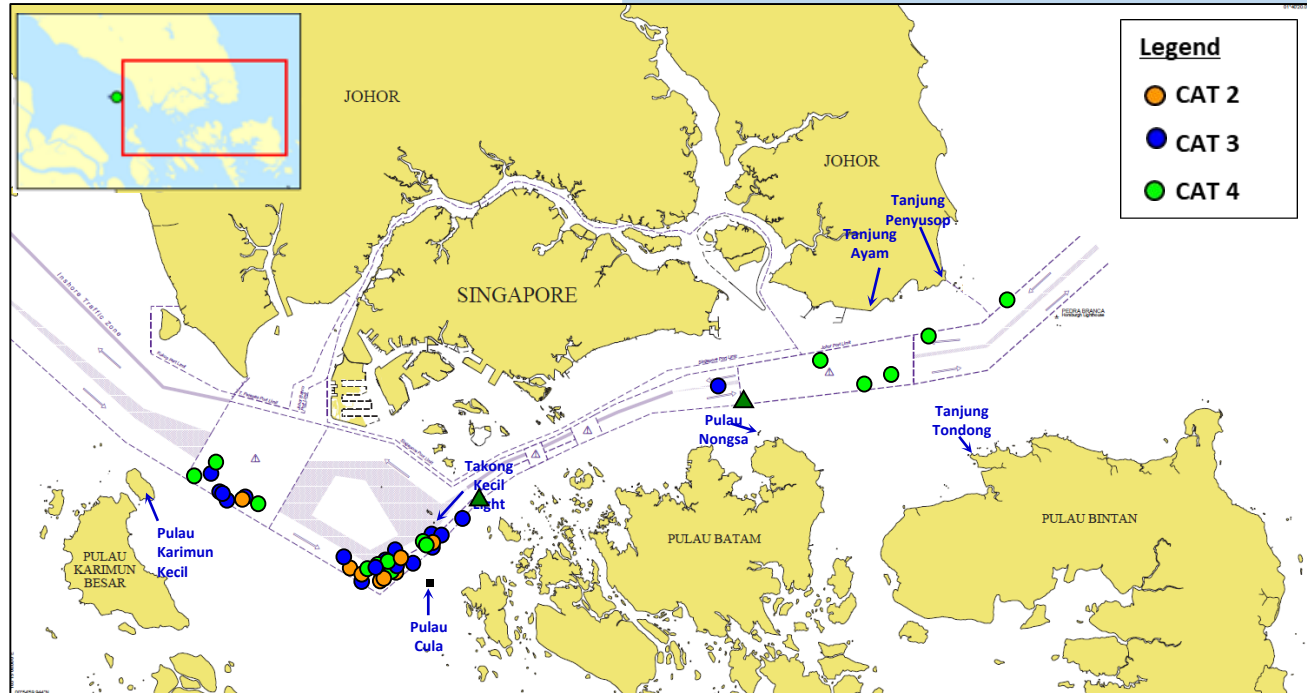
Areas of Concern

- Continued occurrence of incidents in SOMS
- Increase of incidents in Bangladesh
- Threat of abduction of crew for ransom in Sulu-Celebes Seas

Situation Update (January-November 2024)

4. Situation in the Straits of Malacca & Singapore (SOMS)

53 incidents (Jan-Nov 2024)



EASTBOUND LANE

43 incidents

PRECAUTIONARY AREA

6 incidents

WESTBOUND LANE

4 incidents

- ❑ Significance level of incidents: 9 x **CAT 2**, **22 x CAT 3**, 19 x **CAT 4**, 3 x Attempted
- ❑ Type of ships boarded: **Bulk carriers (41)**, Tug boat & drill ship/barge (6), Tanker (5), General cargo ship (1)
- ❑ Time of incidents: 1800-2359 hrs (6), **0000-0559 hrs (42)**, 1000-1659 hrs (5)

Situation Update (January-November 2024)

5. Abduction of Crew in Sulu-Celebes Seas

- ❑ No incident since January 2020
- ❑ No crew held in captivity
- ❑ Philippine Coast Guard downgraded threat of abduction of crew



- ❑ **Moderate Low:** *“Incidents are unlikely to occur due to perpetrators’ perceived lack of capability to orchestrate an attack. Nevertheless, minimal damages are expected to the vessel and crew in case of an attack”*
- ❑ ReCAAP ISC updated Advisory to ships to “exercise vigilance & adopt necessary preventive measures while transiting the area”
 - Ships to maintain communication with the authorities & report all incidents to Operation Centre of the Philippines & Malaysia

6. Thrust Area

- ❑ Maintain latest situation update
 - ❖ ReCAAP Interactive Dashboard – *'Re-VAMP'*
- ❑ Crew to maintain lookout, exercise caution, implement BMP when transiting areas of concern & ensure CCTV, VDR, camera operational to capture data
 - ❖ *'Regional Guide 2 to Counter Piracy & Armed Robbery against Ships in Asia'*
- ❑ Use **Mobile App & Posters** to facilitate timely reporting of incident (actual & attempted) to nearest coastal State's RCC & flag State -
 - ❖ *Mobile Application - 'ReCAAP' (download from Apple & Goggle Play Store)*
 - ❖ *'Piracy & Armed Robbery against Ships in Asia: Reporting of Incidents - Contact Details'*
 - ❖ *'Guidelines & Reporting of Incident by Vessels – Straits of Malacca & Singapore'*
- ❑ Report all incidents, suspicious activities & sightings of boats in vicinity
 - ❖ *'Guide Book on Identification of Fishing Boats in Asian Waters (version 2)'*