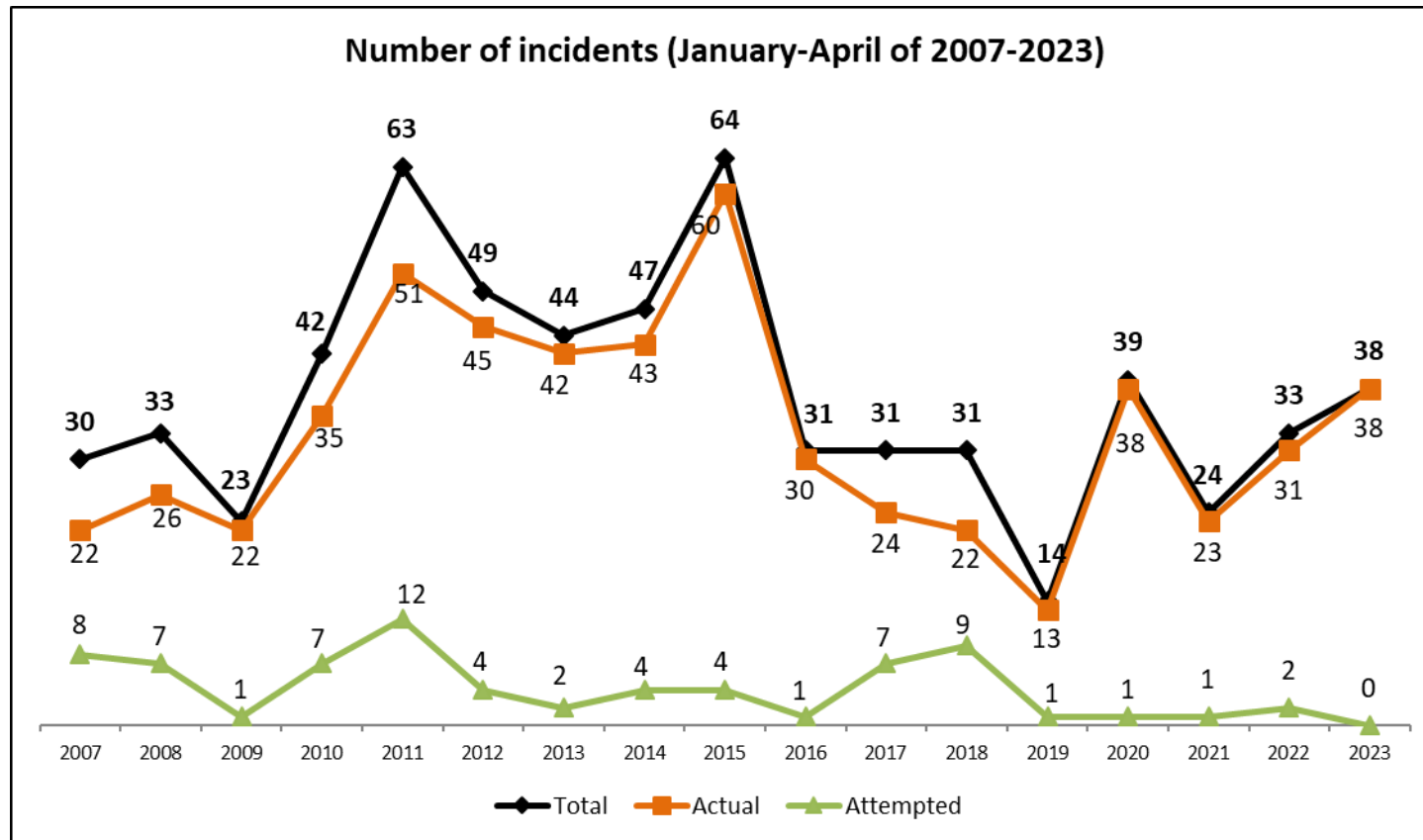


Situation Update (January-April 2023)

1. Number of Incidents

- ❑ 38 incidents (all actual) reported during January-April 2023
- ❑ Increased by 15% compared to January-April 2022 (33 incidents)

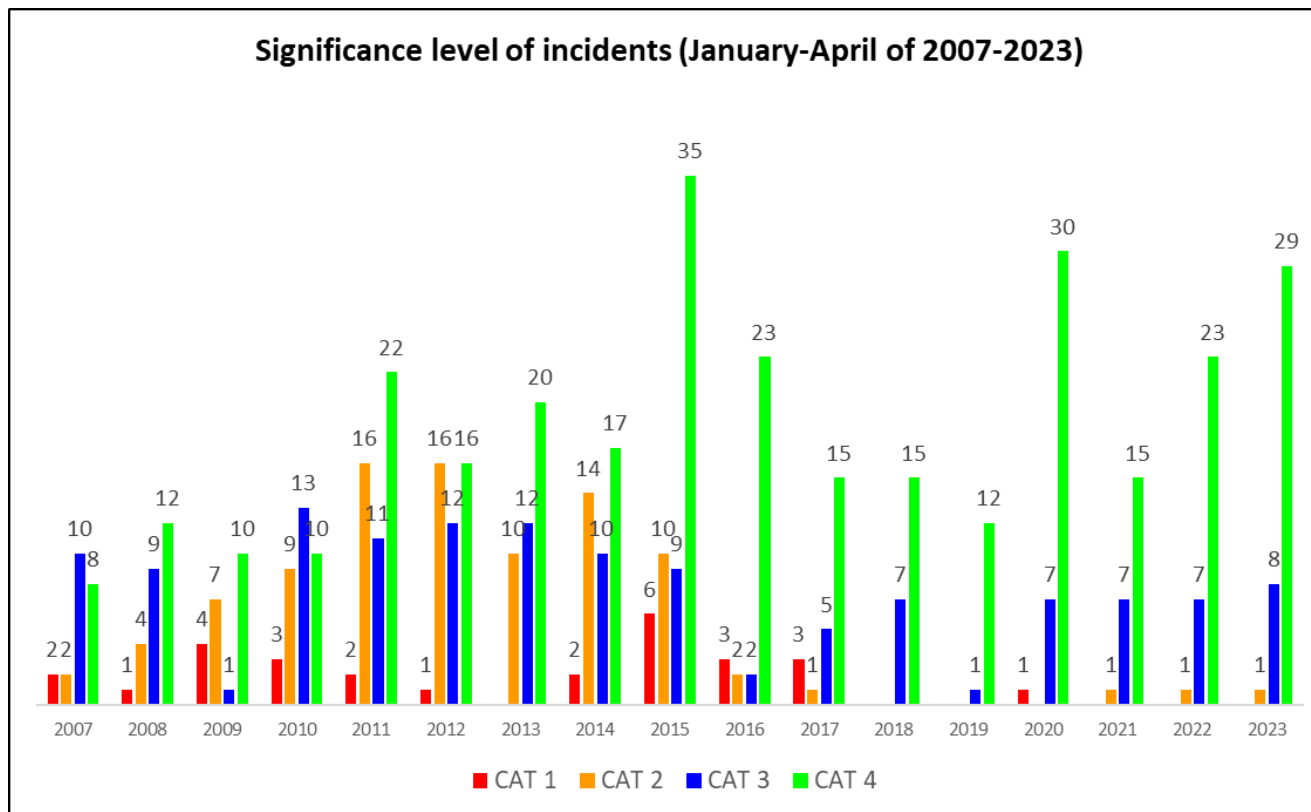


Situation Update (Jan-Apr 2023) (cont'd)

2. Severity of Incidents

❑ 38 actual incidents during January-April 2023

- 1 x CAT 2, 8 x CAT 3 and 29 x CAT 4
- No CAT 1 incident was reported
- Majority (76%) are CAT 4 incidents (perpetrators not armed, crew not injured)



3. Location of Incidents

Number of incidents during Jan-Apr 2023 Vs Jan-Apr 2022

- Straits of Malacca & Singapore (SOMS) (26)
- Philippines (5)
- Indonesia (5)
- India (2)

Areas of Concern

- Increase of incidents in SOMS
- Threat of abduction of crew for ransom in Sulu-Celebes Seas

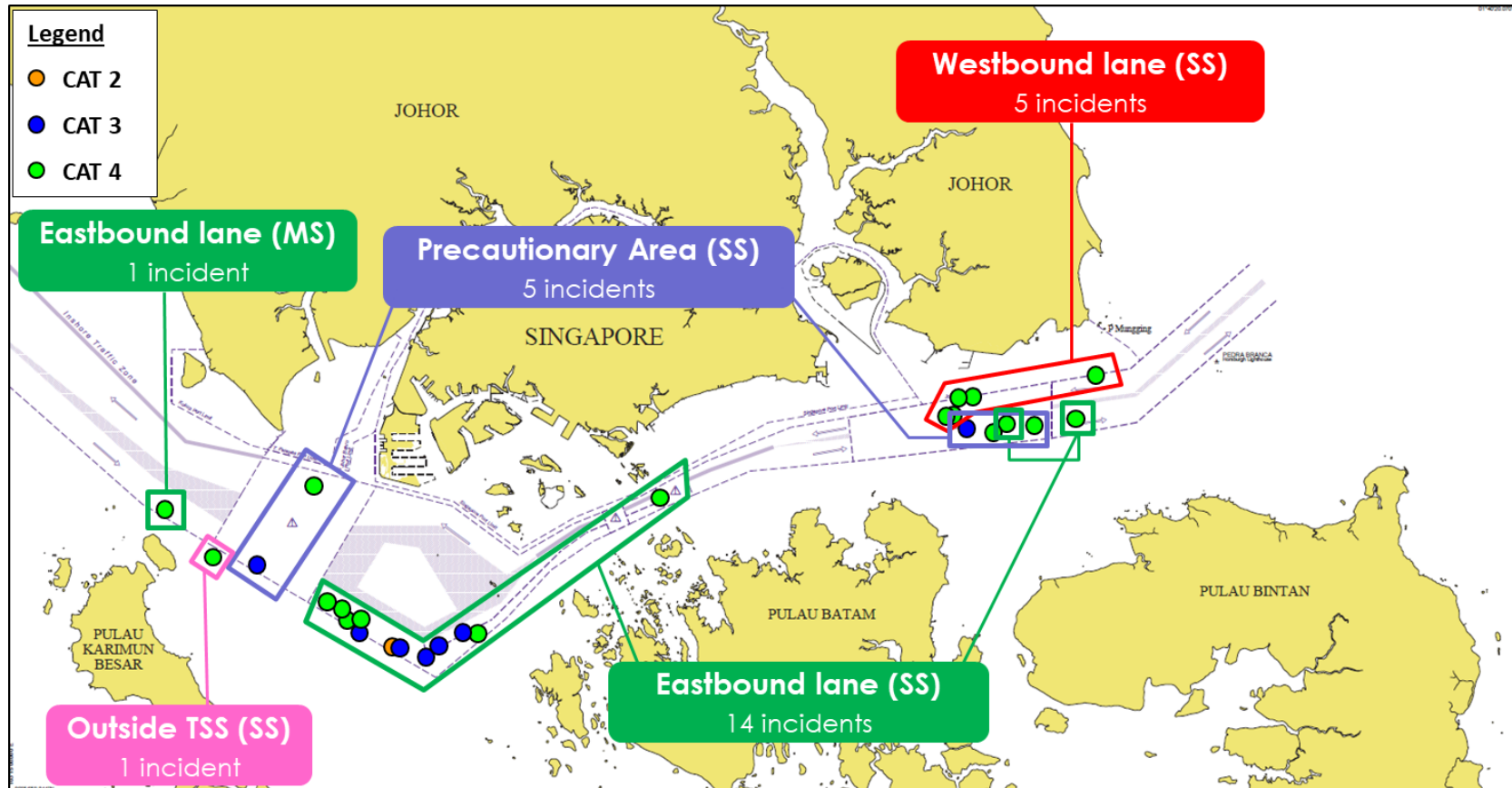
☐ Increase of Incidents:

- Indonesia [[5 incidents during Jan-Apr 2023](#) vs 3 incidents during Jan-Apr 2022]
- Philippines [[5 incidents during Jan-Apr 2023](#) vs 3 incidents during Jan-Apr 2022]
- SOMS [[26 incidents during Jan-Apr 2023](#) vs 21 incidents during Jan-Apr 2022]

☐ Decrease of incidents:

- Bangladesh [[0 incident during Jan-Apr 2023](#) vs 3 incidents during Jan-Apr 2022]
- India [2 [incidents during Jan-Apr 2023](#) vs 3 incidents during Jan-Apr 2022]

4. Situation in the Straits of Malacca & Singapore (SOMS)



- ❑ A total of **26 incidents in SOMS** [25 incidents in SS, 1 incident in MS]
- ❑ 1 x **CAT 2**, 7 x **CAT 3**, 18 x **CAT 4**
- ❑ **Bulk carriers** (16), **Tankers** (3), **Barges towed by tug boats** (7)

5. Abduction of Crew in Sulu-Celebes Seas

- No incident reported since January 2020
- No crew currently held in captivity
- Philippine Coast Guard recommends downgrading threat of abduction of crew from 'Potentially High' to '**Moderate**' [meaning *Incidents possible to occur but relatively less severe in nature*]
- ReCAAP ISC updated Advisory to ships to consider re-route from the area as an option
 - For ships transiting the area, ship master are encouraged to exercise vigilance & report immediately to Operation Centres of the Philippines & Malaysia

6. Thrust Area

- Brief crew & maintain proper lookout
- Exercise caution & implement BMP when transiting areas of concern
- Maintain CCTV, VDR & camera operational to capture data

[Refer to '*Regional Guide 2 to Counter Piracy & Armed Robbery against Ships in Asia*']

- Timely reporting of incident (actual & attempted) to nearest coastal State RCC & flag State

[Refer to Poster on '*Piracy & Armed Robbery against Ships in Asia Reporting of Incidents - Contact Details*']

- Report all incidents, suspicious activities & sightings of boats in vicinity

[Refer to '*Guide Book on Identification of Fishing Boats in Asian Waters*']