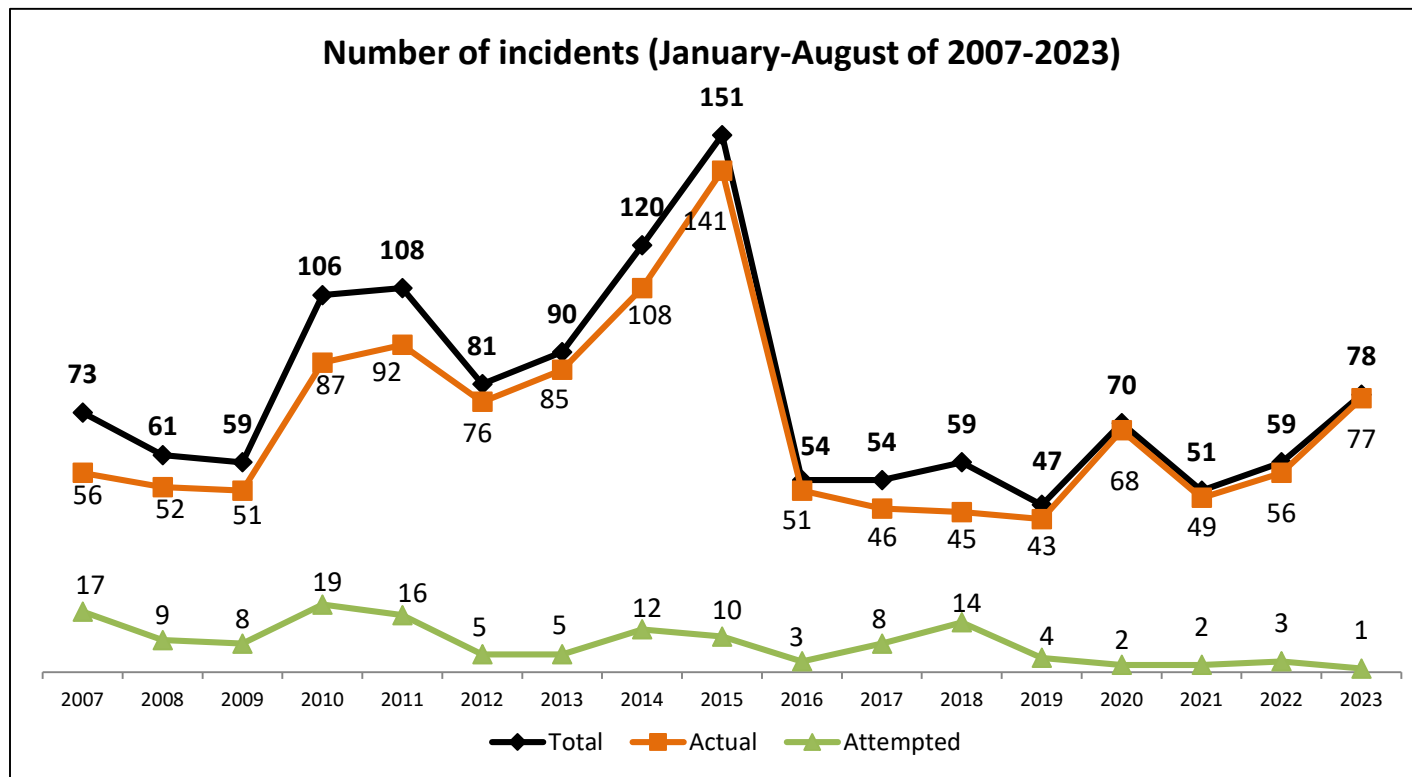


Situation Update (January-August 2023)

1. Number of Incidents

- ❑ **78 incidents** (77 actual and one attempted)
- ❑ **Increased by 32%** compared to January-August 2022 (59 incidents)
- ❑ No incident of **piracy** (on high seas)
- ❑ All **armed robbery/theft** incidents (internal waters, territorial seas & archipelagic waters – coastal States' jurisdiction)

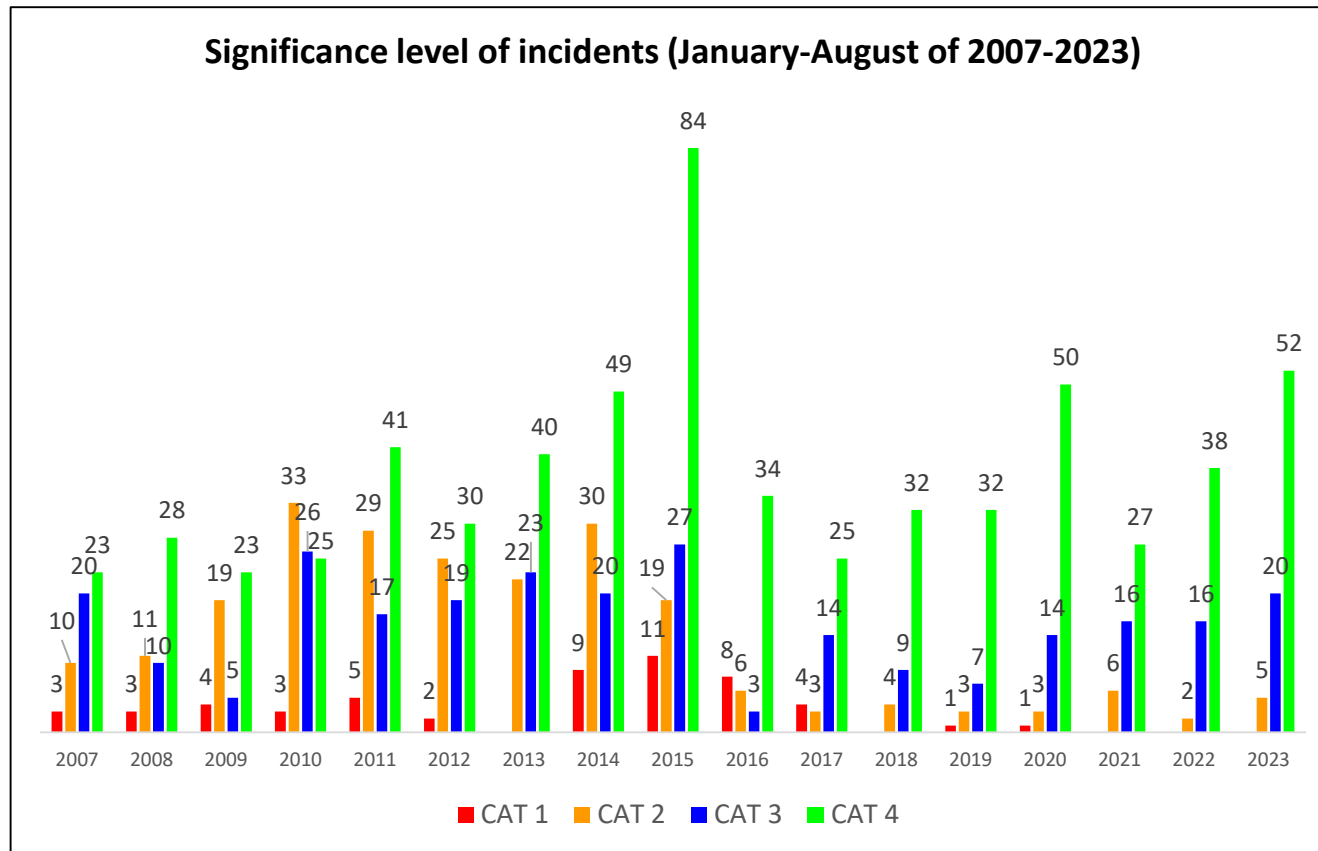


Situation Update (January-August 2023)

2. Severity of Incidents

☐ 77 actual incidents

- 5 x CAT2, 20 x CAT3 & 52 x CAT4
- No CAT1 incident reported
- Majority (68%) CAT4 incidents (perpetrators not armed, crew not injured)



3. Location of Incidents

Number of incidents during Jan-Aug 2023 vs Jan-Aug 2022

- Straits of Malacca & Singapore (SOMS) (55)
- Indonesia (8)
- Philippines (8)
- India (3)
- Vietnam (2)
- Bangladesh (1)
- Thailand (1)

☐ Increase of incidents:

- SOMS [55 vs 38]
- Philippines [8 vs 4]
- Vietnam [2 vs 0]
- Thailand [1 vs 0]

☐ Decrease of incidents:

- Bangladesh [1 vs 4]
- Indonesia [8 vs 9]
- Malaysia [0 vs 1]

☐ No change:

- India [3]

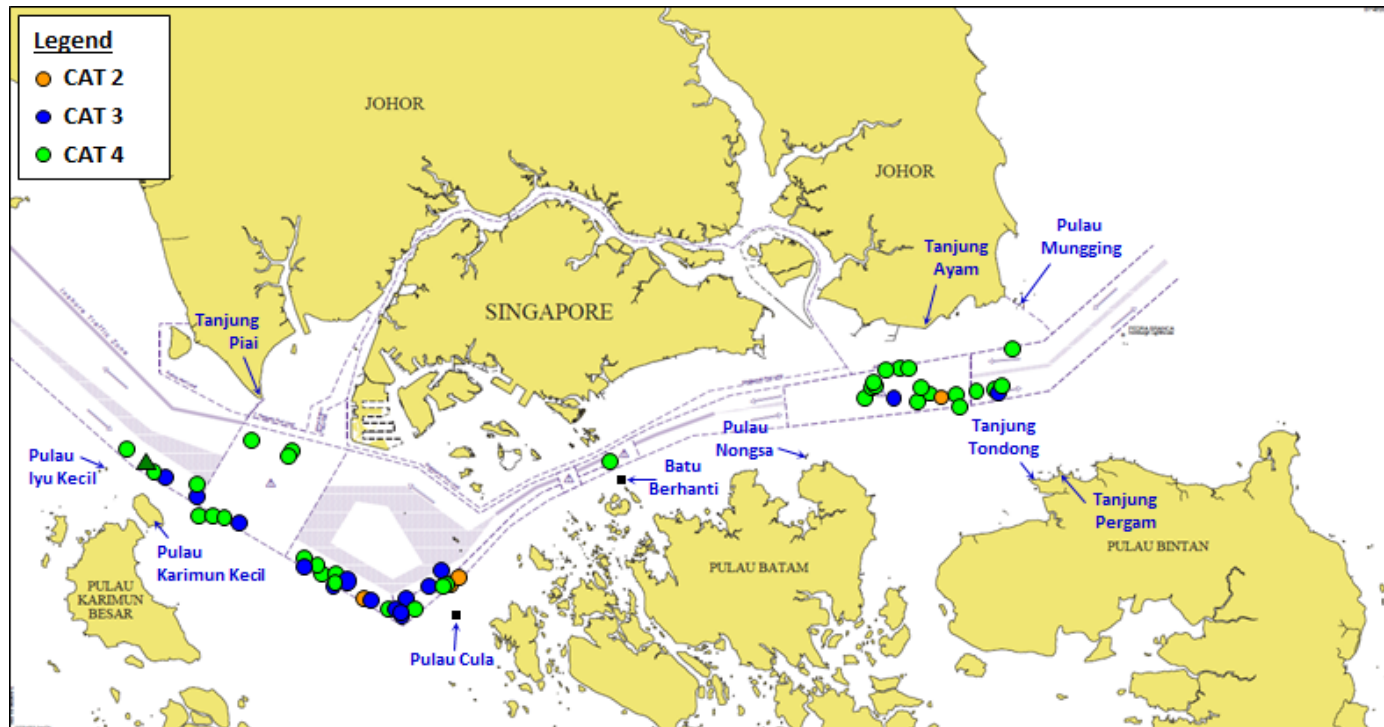
Areas of Concern

- Increase of incidents in SOMS
- Threat of abduction of crew for ransom in Sulu-Celebes Seas

Situation Update (January-August 2023)

4. Situation in the Straits of Malacca & Singapore (SOMS)

55 incidents (Jan-Aug 2023) Vs 55 in 2022



Eastbound lane (37 incidents)

Bulk carrier (30)
Tanker (5)
Tug boat & barge (1)
Supply vessel (1)

Precautionary Area (11 incidents)

Bulk carrier (7)
Tug boat & barge (4)

Westbound lane (6 incidents)

Tug boat & barge (6)

Outside TSS (1 incident)

Bulk carrier (1)

❑ 51 incidents in Singapore Strait, 4 incidents in Malacca Strait]

❑ 4 x **CAT 2**, 15 x **CAT 3**, 35 x **CAT 4**, 1 x Attempted

❑ Bulk carriers (38), Barges towed by tug boats (11), Tankers (5), Supply vessel (1)

5. Abduction of Crew in Sulu-Celebes Seas

- No incident since January 2020
- No crew held in captivity
- Philippine Coast Guard recommended downgrading threat of abduction of crew from 'Potentially High' to '**Moderate**' [meaning *Incidents possible to occur but relatively less severe in nature*]
- ReCAAP ISC updated Advisory to ships to consider re-route from the area as an option
 - For ships transiting the area, ship master encouraged to exercise vigilance & report immediately to Operation Centres of the Philippines & Malaysia

6. Thrust Area

- Brief crew & maintain proper lookout
- Exercise caution & implement BMP when transiting areas of concern
- Maintain CCTV, VDR & camera operational to capture data

[Refer to '*Regional Guide 2 to Counter Piracy & Armed Robbery against Ships in Asia*']

- Timely reporting of incident (actual & attempted) to nearest coastal State RCC & flag State

[Refer to Poster on '*Piracy & Armed Robbery against Ships in Asia Reporting of Incidents - Contact Details*']

- Report all incidents, suspicious activities & sightings of boats in vicinity

[Refer to '*Guide Book on Identification of Fishing Boats in Asian Waters*']