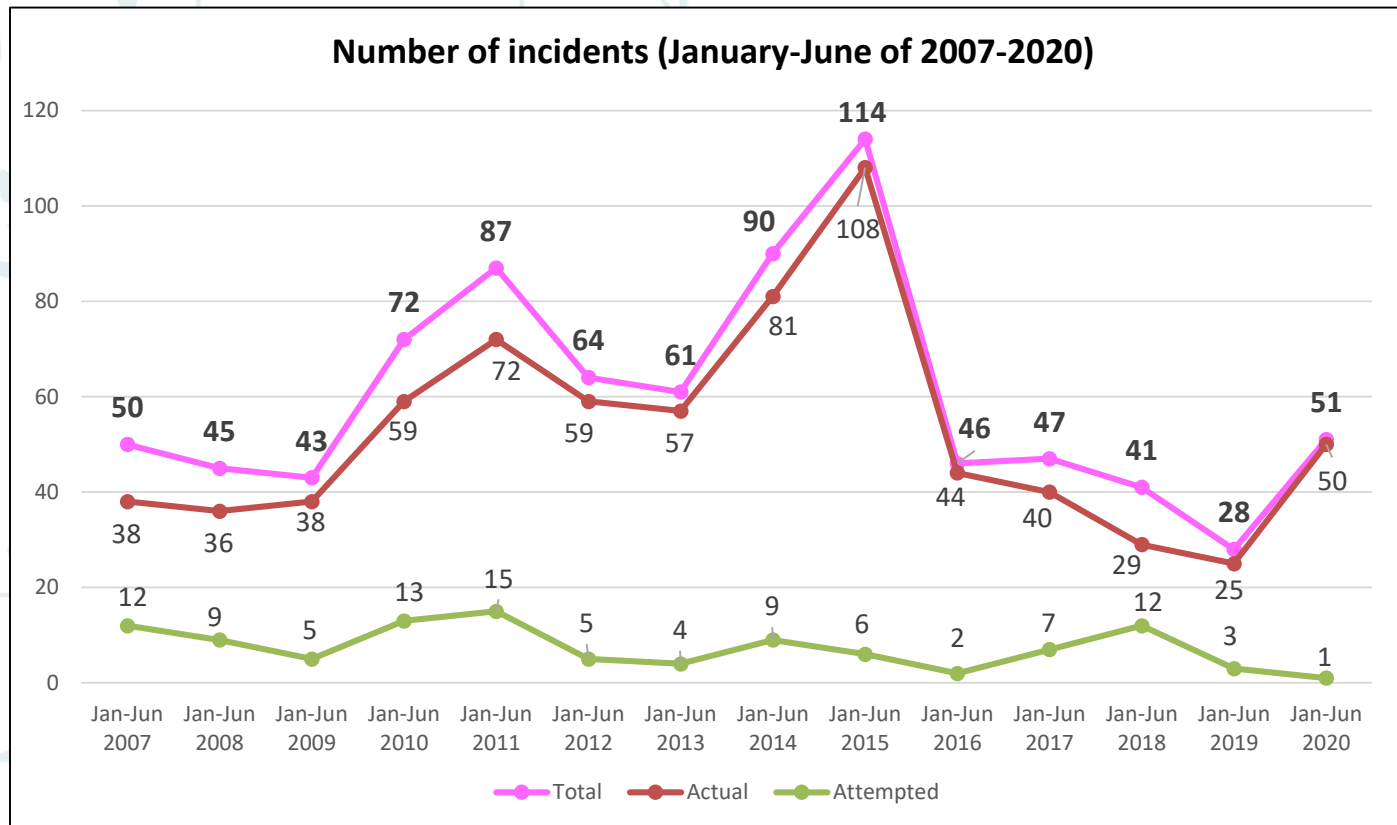


Situation Update (January-June 2020)

1. Number of Incidents

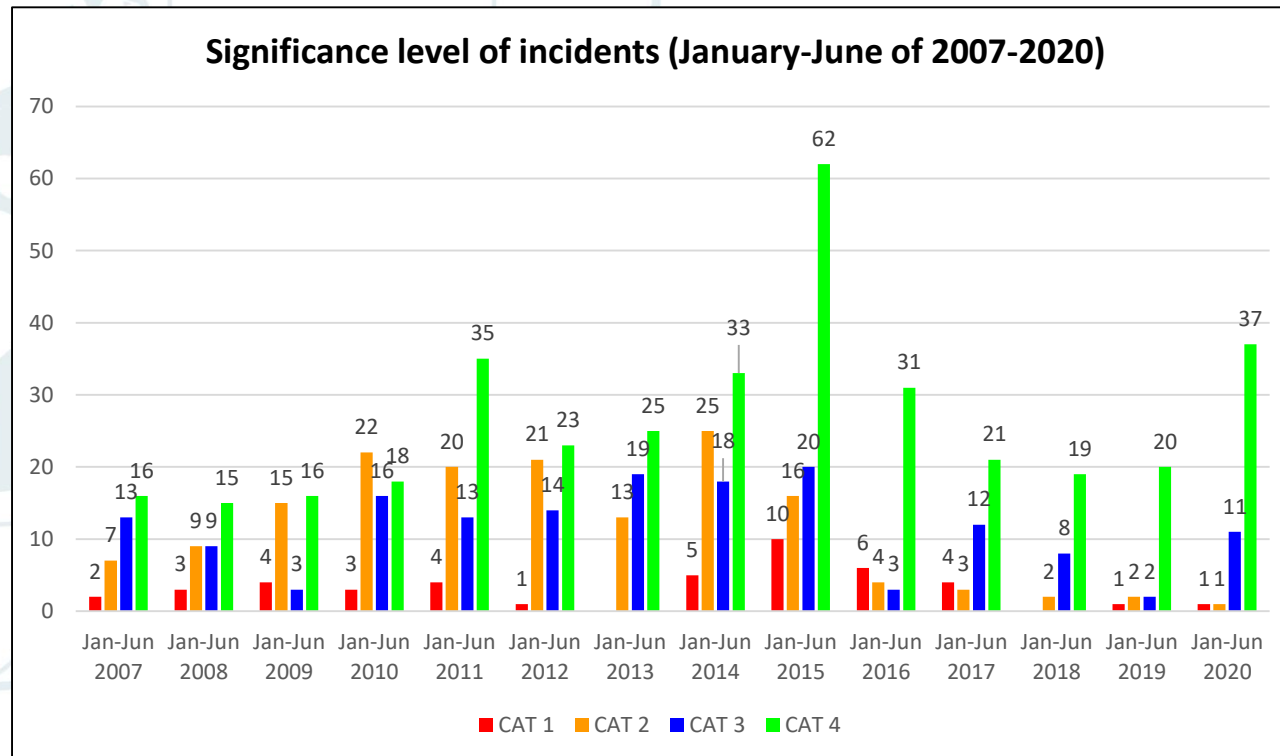
- 51 incidents (50 actual and one attempted) during Jan-Jun 2020
- Close to a two-fold increase compared to Jan-Jun 2019
- Highest number of incidents among the past five-year period of January-June (2016-2020)



Situation Update (January-June 2020)

2. Severity of Incidents

- ❑ 50 actual incidents during Jan-Jun 2020
 - 1 x CAT 1, 1 x CAT 2, 11 x CAT 3 and 37 x CAT 4
 - CAT 1: Actual incident of abduction of crew
 - CAT 2: Lowest number of incident among the 14-year period of Jan-Jun of 2007-2020
 - Majority (74%) are CAT 4 incidents (perpetrators not armed, crew not harmed)



Situation Update (January-June 2020)

3. Location of Incidents

- Straits of Malacca and Singapore (**16**)
- Indonesia (**13**)
- India (**7**)
- Philippines (**6**)
- Bangladesh (**3**)
- South China Sea (**2**)
- Vietnam (**2**)
- Malaysia (**1**)
- Sulu-Celebes Seas (**1**)

Piracy

(2 incidents)

Armed robbery against ships

(49 incidents)

Mostly at ports and anchorages

India

Jan-Jun 2019: 2 actual incidents

Jan-Jun 2020: 7 actual incidents

Indonesia

Jan-Jun 2019: 9 incidents
(7 actual & 2 attempted)

Jan-Jun 2020: 13 incidents
(12 actual & 1 attempted)

Philippines

Jan-Jun 2019: 2 actual incidents

Jan-Jun 2020: 6 actual incidents

Bangladesh

Jan-Jun 2019: 0 incident

Jan-Jun 2020: 3 actual incidents

Malaysia

Jan-Jun 2019: 2 actual incidents

Jan-Jun 2020: 1 actual incident

Vietnam

Jan-Jun 2019: 0 incident

Jan-Jun 2020: 2 actual incidents

Mostly while underway

Singapore Strait

Jan-Jun 2019: 8 actual incidents

Jan-Jun 2020: 16 actual incidents

South China Sea

Jan-Jun 2019: 0 incident

Jan-Jun 2020: 2 actual incidents

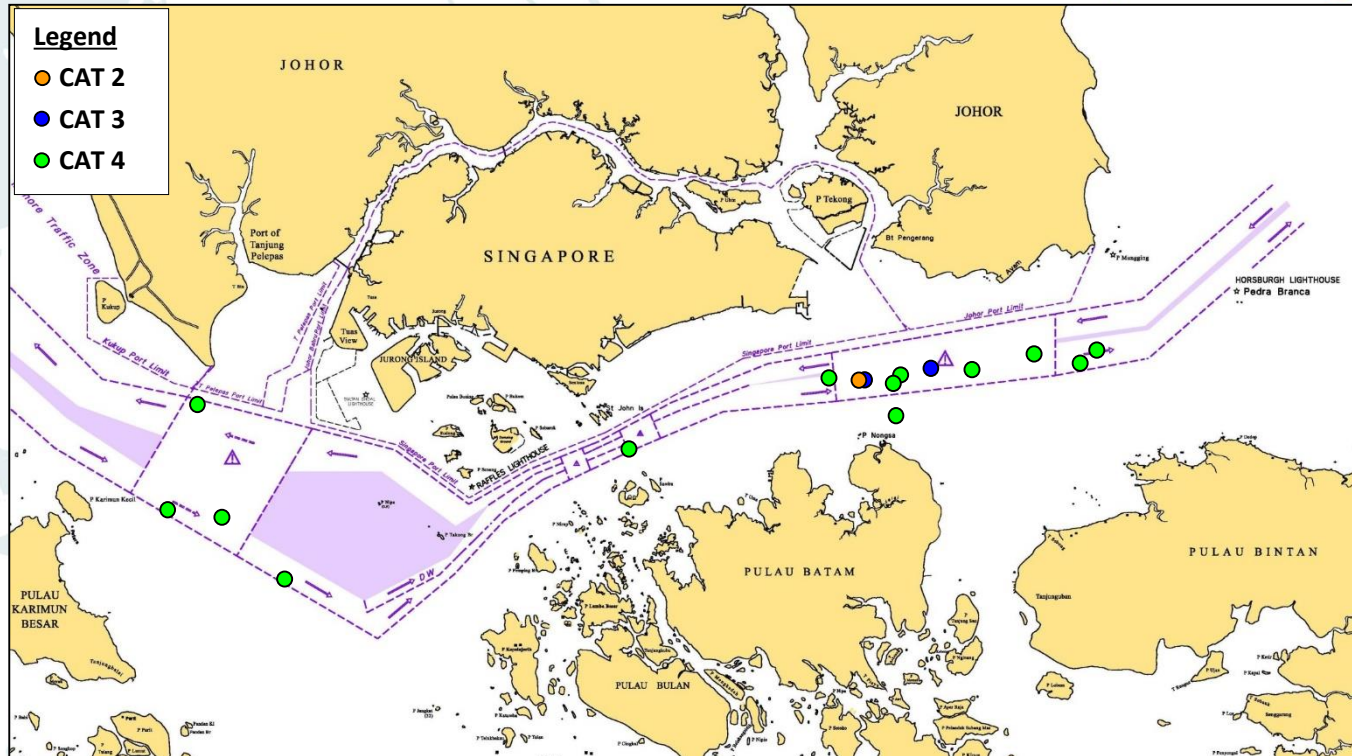
Sulu-Celebes Seas

Jan-Jun 2019: 1 actual incident

Jan-Jun 2020: 1 actual incident

Situation Update (January-June 2020)

4. Situation in Singapore Strait



- ❑ **13 incidents** in **eastbound lane** of the Traffic Separation Scheme (TSS) in Singapore Strait
 - 1 x CAT 2, 2 x CAT 3, 10 x CAT 4
- ❑ **1 incident** in **westbound lane** of the TSS in Singapore Strait (CAT 4)
- ❑ **1 incident just outside (south)** of the TSS (CAT 4)
- ❑ **1 incident** in **precautionary area** in Singapore Strait (CAT 4)
- ❑ **Bulk carriers (8), tankers (3); Barges and supply vessel towed by tug boats (5)**

Abduction of Crew in Sulu-Celebes Seas

Type of Ships (Mar 2016 – Jun 2020)

Incident/Type & GT of Ships	2016	2017	2018	2019	Jan-Jun 2020
Actual incidents (20 incidents)	<u>12</u> 5 – Tug boat (60 – 269 GT) 5 – Fishing trawler/boat (NA) 1 – General cargo ship (11,391 GT) 1 – Bulk carrier (2,999 GT)	<u>3</u> 1 – Tug boat (225 GT) 1 – Fishing trawler (NA) 1 – Bulk carrier (2,875 GT)	<u>2</u> 2 – Fishing boat (NA)	<u>2</u> 2 – Fishing boat (NA)	<u>1</u> 1 – Fishing trawler (NA)
Attempted incidents (11 incidents)	<u>6</u> 5 – Bulk carrier (17,979 – 93,169 GT) 1 – Product tanker (5,557 GT)	<u>4</u> 1 – Container ship (NA) 1 – Bulk carrier (45,026 GT) 1 – General cargo ship (1,599 GT) 1 – Passenger/Cargo ferry (NA)	<u>1</u> 1 – Container ship (NA)		
Status of abducted crew Total 86 (as on 30 Jun 2020)	Crew released/rescued (<u>71</u>), Crew killed/died (<u>10</u>), Crew in captivity (<u>5</u>)				