

Incident Alert

Incident Report: 09/2009
Date/Time of Incident: 12 July 2009 at 0225 hrs (local time)
Location of incident: 01° 08.29' N, 103° 46.81' E
Area Description: Northeast of Helen Mar Reef
Name and Type of Ship: *Weihai 5* / tug boat

Details of Incident

A Singapore registered tug boat, *Weihai 5* towing barge *Jovan 1* loaded with granite departed Lumut, West Malaysia for Singapore. At or about 0225 hours (local time) on 12 July 2009, five robbers boarded the tug boat from their speed boat at position 01° 08.29'N, 103° 46.81' E (northeast of Helen Mar Reef in the east bound lane of the Straits of Singapore).

Four of the robbers worn masks and armed with parangs. The robbers after boarding the tug boat, took away mobile phones, money and other valuables from the crew. They also damaged the communication equipment on board *Weihai 5* before fleeing. The full complement of six Indonesian crew on board the tug boat was not harmed.

The master of *Weihai 5* reported the incident to Singapore VTIS via VHF radio. Singapore's Port Operations Control Centre (POCC) who is also the ReCAAP Focal Point (Singapore) initiated a NAVTEX broadcast warning mariners about the incident and notified the RCC Basarnas, Indonesia.

Reported by

ReCAAP Focal Point (Singapore)

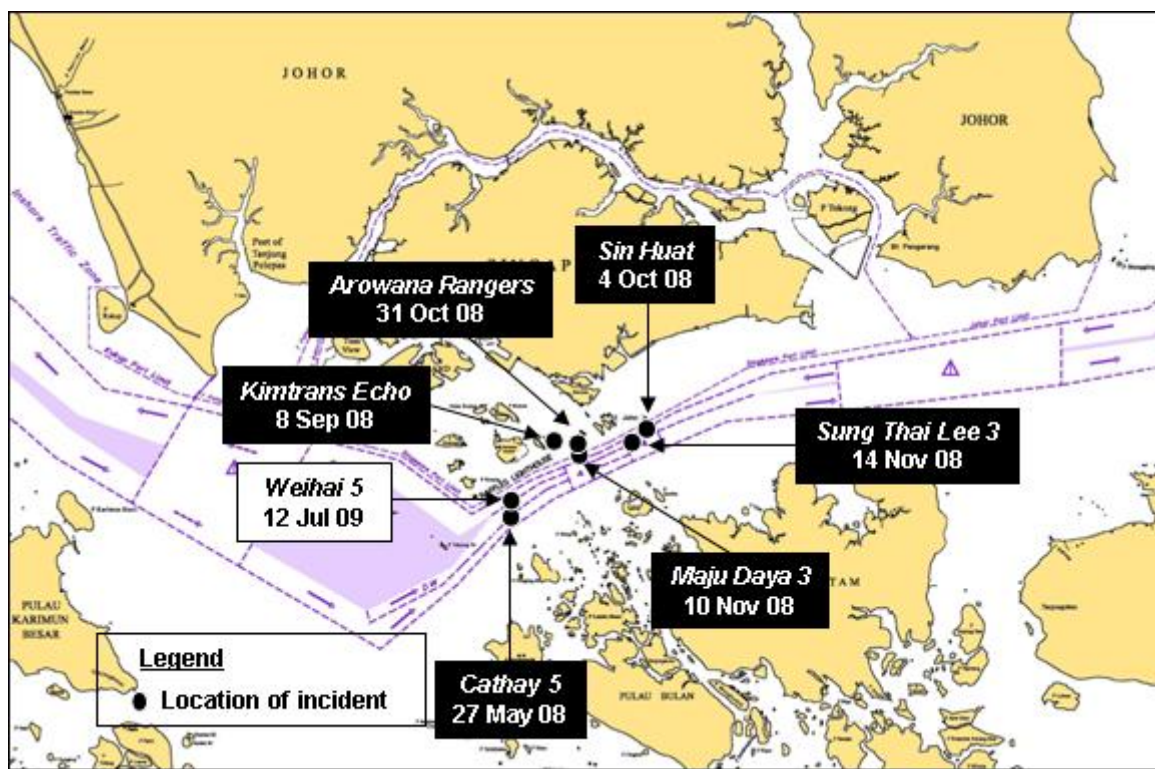


Comments by the ReCAAP ISC

The incident involving *Weihai 5* is the first incident reported in 2009 that occurred off Helen Mar Reef. In 2008, a total of six incidents were reported in the vicinity. Of the seven incidents, five incidents involved tug boats and the other two incidents involved a tanker and a general cargo ship. All incidents occurred when the ships were underway. Please see map below on the location of these incidents.

Ship masters and crew are advised to maintain extra vigilance as trend from past incidents indicate that the robbers are likely to strike in succession and move on to another location when the authorities' attention are drawn.

The ReCAAP ISC encourages ship masters to report all incidents of piracy and armed robbery to the nearest coastal state immediately.



Approximate location of incidents

