

Incident Report:	01/2013
Name and Type of Ship:	(1) <i>Eng Tou 266</i> / Flat-top deck cargo barge (2) <i>AD Phoenix</i> / Asphalt tanker (3) <i>Nadiya Melisende</i> / Product tanker (4) <i>Crest 2821</i> /Flat-top deck cargo barge
Date/Time of Incident:	(1) 22 Apr 13 at 2250 hrs (local time) (2) 23 Apr 13 at 0407 hrs (local time) (3) 24 Apr 13 at 0400 hrs (local time) (4) 29 Apr 13 at 0200 hrs (local time)
Location of incident:	(1) 1° 19.4' N, 104° 10.1' E (2) 1° 19.0' N, 104° 47.0' E (3) 1° 17.6' N, 104° 50.0' E (4) 1° 13.5' N, 103° 58.2' E
Area Description:	(1) Off Tanjung Ayam, Malaysia (2) Approximately 13 nm northeast of Pulau Bintan, Indonesia (South China Sea) (3) Approximately 15.4 nm north-northeast of Pulau Bintan, Indonesia (South China Sea) (4) Approximately 3.2 nm northwest of Pulau Batam, Indonesia (Straits of Malacca & Singapore)

Details of Incident

Four incidents were reported within a span of one week (22-29 Apr 13) in the South China Sea, off Malaysia and in the Straits of Malacca and Singapore. Two were incidents occurred onboard barges; and another two onboard tankers in close proximity to each other in the South China Sea. The crew was not injured in all four incidents. The details of the incidents are described as follows:

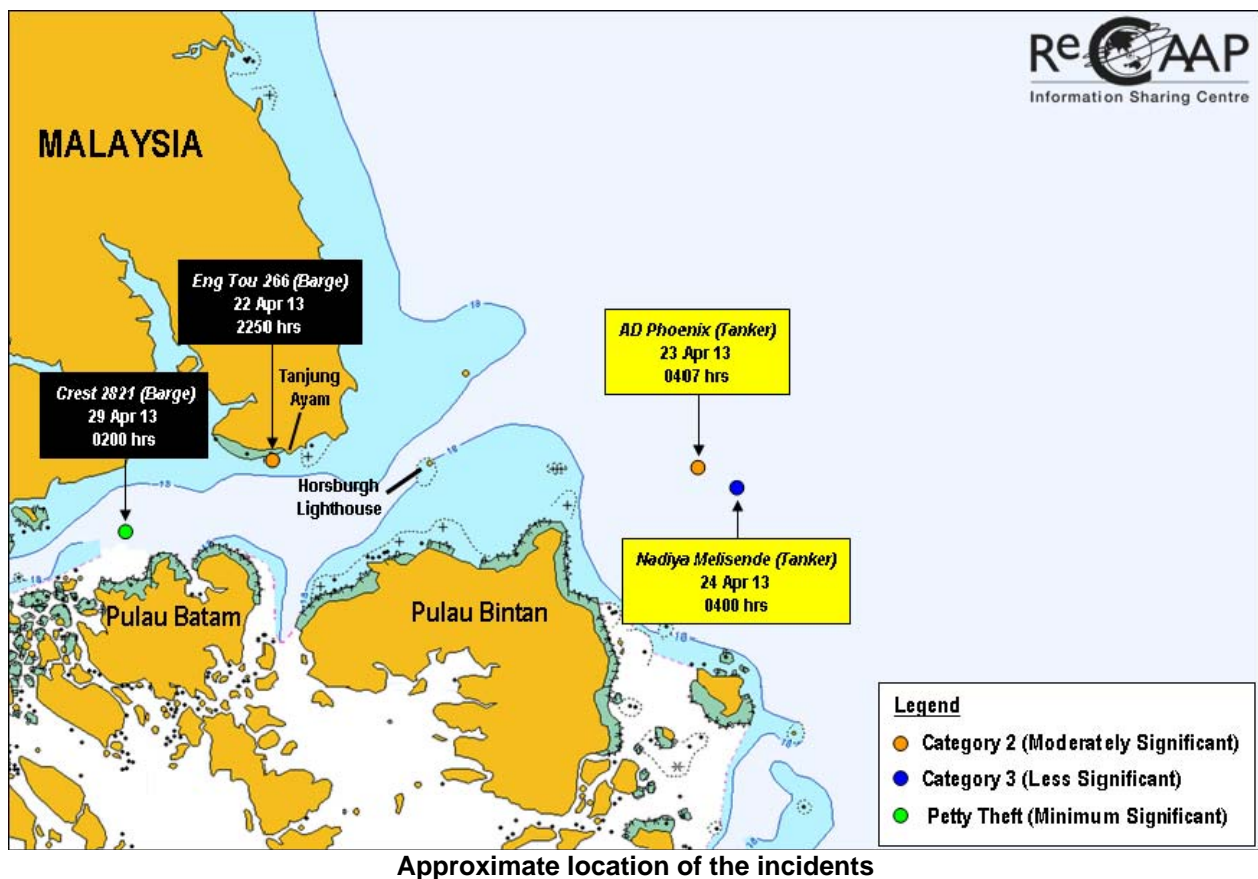
a. On 22 Apr 13 at or about 2250 hrs, a Singapore-registered barge *Eng Tou 266* was anchored at approximately 14 nm west of Horsburgh Lighthouse when crew from a neighbouring barge noticed that an unknown tug boat was pulling *Eng Tou 266* away towards the southern direction. When it was verified that *Eng Tou 266* was indeed missing, the charterer lodged a police report with the Malaysian Marine Police. The barge is still missing at this juncture.

b. On 29 Apr 13 at or about 0200 hrs, a Singapore-registered tug boat *Crest 1* was towing barge *Crest 2821* from Port Klang, Peninsular Malaysia to Bintulu, Sarawak, East Malaysia at approximately 27 nm west of Horsburgh Lighthouse when an unknown number of robbers boarded the barge and escaped with some ship's stores.

c. On 23 Apr 13 at or about 0407 hrs, a Singapore-registered Asphalt tanker *AD Phoenix* was underway in the South China Sea when five pirates armed with pistols and long knives boarded the vessel from a high speed wooden craft. The pirates escaped with cash and the crew's personal belongings.

d. On 24 Apr 13 at or about 0400 hrs, an unknown number of pirates boarded a Kiribati-registered product tanker *Nadiya Melisende* from a high speed wooden craft at a location which was in close proximity to the incident occurred onboard *AD Phoenix* the day before. The pirates escaped with cash, the crew's personal belongings and ship's properties.

Please refer to the map below on the approximate location of the incidents.



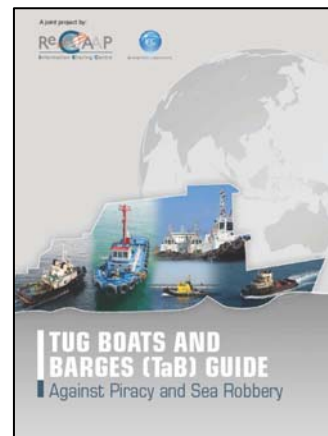
Reported by

ReCAAP Focal Point (Singapore)
Information Fusion Centre (IFC)



Comments by ReCAAP ISC

The ReCAAP ISC encourages master and crew of tug boats towing barges to maintain all around vigilance and look-outs while in the vicinity. Refer to the “Tug Boats and Barges (TaB) Guide” published by the ReCAAP ISC and IFC on proposed guidelines and policies against piracy and armed robbery onboard tug boats and barges. A copy of the TaB Guide can be found at http://www.recaap.org/AlertsReports/IncidentReports.aspx?Command=Core_Download&EntryId=283.



The ReCAAP ISC requests all vessels to look out for *Eng Tou 266* (photograph enclosed below), and report sightings of the barge to the nearest coastal State immediately, noting that *Eng Tou 266* could have been repainted and renamed.



Photographs courtesy of surveyor and company

Missing flat-top deck cargo barge, *Eng Tou 266*

In view of the proximity of the location of the incidents involving *AD Phoenix* and *Nadiya Melisende*, it is possible (although not substantiated with evidences) that the same group of pirates could be involved and possibly are lurking in the vicinity looking out for potential targets. The ReCAAP ISC urges all ship masters and crew operating in the vicinity to exercise vigilance and report all incidents to the coastal State and flag State immediately.