

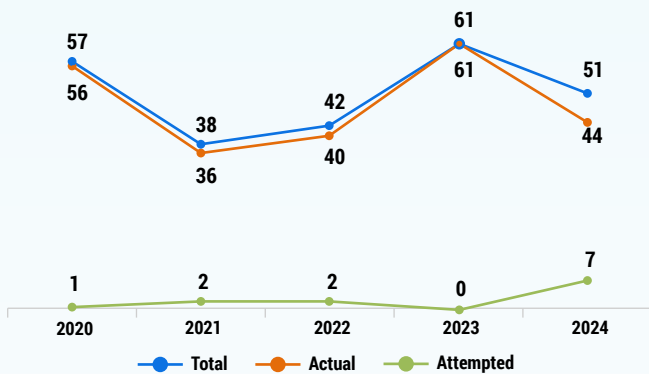
PIRACY AND ARMED ROBBERY AGAINST SHIPS IN ASIA

JANUARY-JUNE 2024

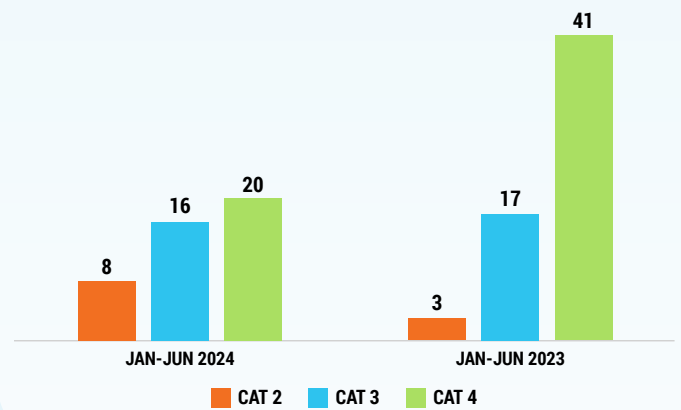


NUMBER OF INCIDENTS **51**

Number of incidents (January-June of 2020-2024)



SEVERITY OF INCIDENTS



ONE PIRACY 50 Armed Robbery Against Ships

Compared to January-June 2023 **16% DECREASE**

JAN-JUN 2024 VS JAN-JUN 2023

Number of CAT 2 & CAT 3 Incidents **55% VS 33%**

43% VS 33% Perpetrators carrying knives, machetes, metal rods

TREATMENT OF CREW

1 VS 2 Assaulted **6 VS 3** Crew Tied Up

2 VS 1 Threatened

LOCATION OF INCIDENTS

ANCHORED

14 Indonesia
10 Bangladesh
2 India
2 Philippines
1 Vietnam

UNDERWAY

21 Straits of Malacca & Singapore
1 South China Sea

COMMENDABLE EFFORTS

ARREST OF PERPETRATORS

Arrest of perpetrators & recovery of stolen items in

3 INCIDENTS

by Bangladesh authorities

VIGILANCE OF CREW

Prevent unauthorised boarding in

7 INCIDENTS

occurred in Bangladesh, Indonesia, SOMS & Vietnam

STRAITS OF MALACCA AND SINGAPORE (SOMS)

12
INCIDENTS

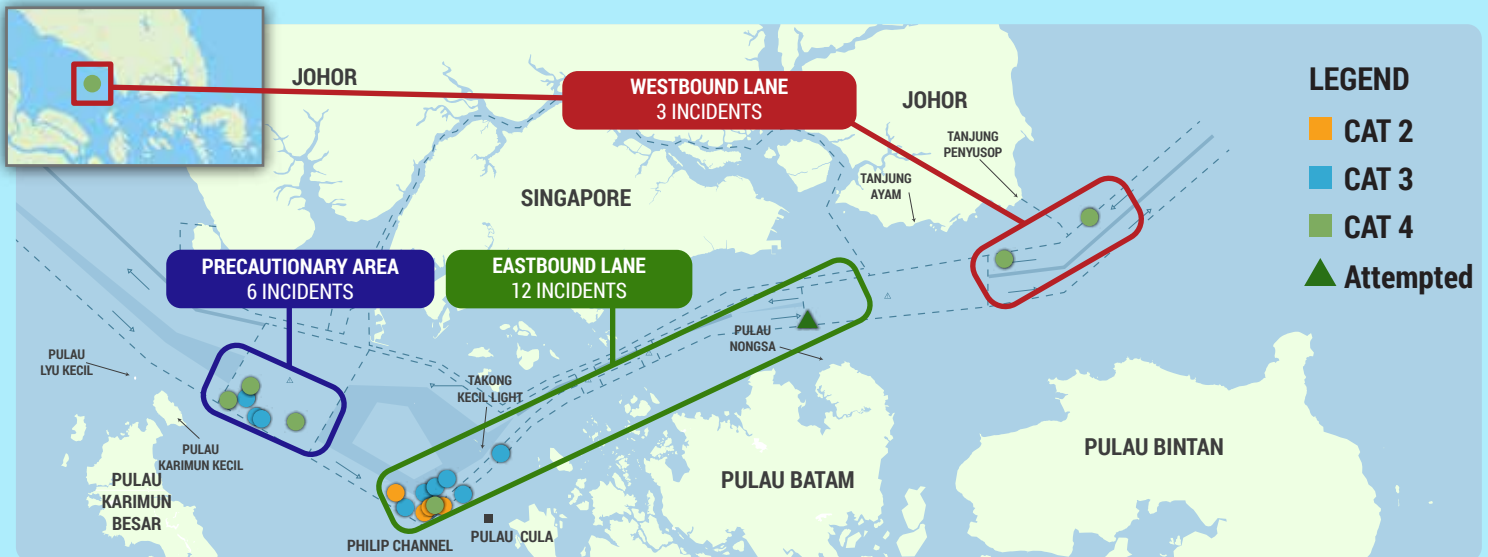
Eastbound Lane

6
INCIDENTS

Precautionary Area

3
INCIDENTS

Westbound Lane



21 INCIDENTS

49%

compared with Jan-Jun 2023 (41 incidents)

81%

Majority occurred onboard bulk carriers

14%

Tug boats towing barges/drill ship

5%

Chemical tanker

48%

Engine spares most commonly stolen

38%

Perpetrators escaped empty-handed

14%

Crew tied up

5%

Crew suffered minor injury

81%

Crew not injured

Abduction of Crew in Sulu-Celebes Seas and Waters off Eastern Sabah

- No incident reported during Jan-Jun 2024; last known incident on 17 Jan 2020
- Threat of 'Abduction of crew for ransom in the Sulu-Celebes Seas': 'MODERATE LOW' - 'Incidents are unlikely to occur due to perpetrators' perceived lack of capability to orchestrate an attack. Nevertheless, minimal damages are expected to the vessel and crew in case of an attack.'

ADVISORY & GUIDANCE

- ReCAAP ISC Advisory – ships to exercise vigilance & adopt necessary preventive measures while transiting the area
- Refer to ReCAAP ISC Guidance on Abduction of Crew in the Sulu-Celebes Seas and Waters off Eastern Sabah

