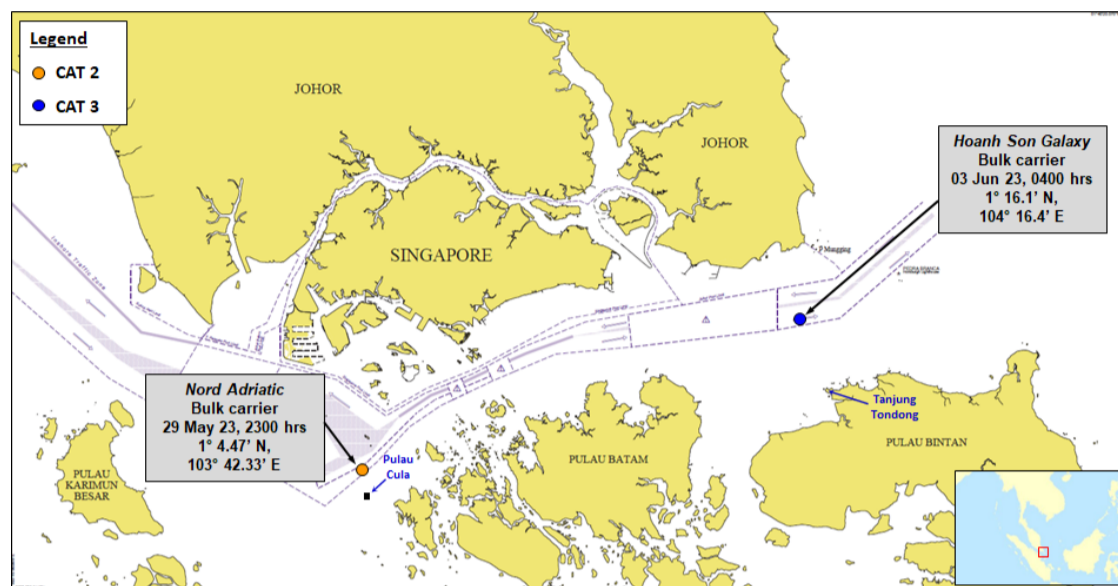


OVERVIEW

Two incidents (one CAT 2¹ incident and one CAT 3² incident) of armed robbery against ships in Asia were reported to ReCAAP ISC. The incidents occurred on 29 May and 3 Jun, on board bulk carriers while underway in the eastbound lane of the Traffic Separation Scheme in the Singapore Strait (SS). In both incidents, the perpetrators were armed. In the incident on 29 May, the perpetrators tied up the chief engineer who managed to free himself and reported incident to the bridge. The perpetrators took his watch and mobile phone; and some generator spare parts. Nothing was stolen in the other incident. The crew were safe in both incidents. Details of incidents are shown in table (*).



Factors	Location	
	Singapore Strait	
	North of Pulau Cula, Indonesia (1 incident)	Northwest of Pulau Tondong, Indonesia (1 incident)
Type of ship	Bulk carrier	Bulk carrier
Date/Time	29 May at 2300 hrs	3 Jun at 0400 hrs
Number of perpetrators	4 perpetrators	3 perpetrators/1 small boat
Weapons	Jungle bolo	Knives
Treatment of crew	Crew tied up	No injuries
Significance level	CAT 2	CAT 3
Items stolen	Crew's watch & mobile phone, engine spares	Nothing stolen

AREA OF CONCERN

The ReCAAP ISC is concerned with the continued occurrence of incidents in the Straits of Malacca and Singapore (SOMS). With this incident, a total of 31 incidents were reported in the SOMS since January 2023. Of these, 30 incidents occurred in the SS, and one incident in the Malacca Strait (MS). The Centre advises ships to continue to exercise enhanced vigilance when transiting SOMS; and the littoral States to increase patrols and enforcement in the area.

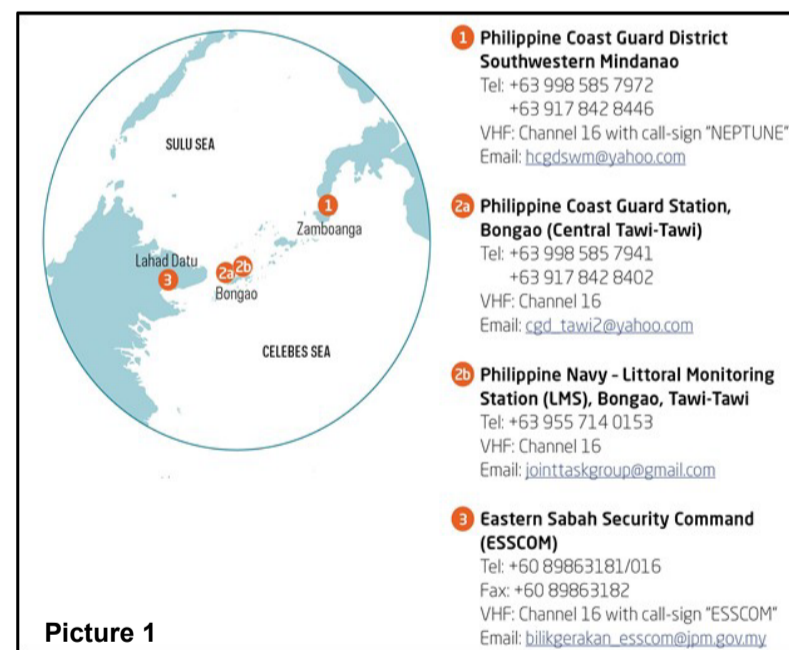
SITUATION OF ABDUCTION OF CREW IN THE SULU-CELEBES SEAS AND WATERS OFF EASTERN SABAH

Downgrading of threat level

- The Philippine Coast Guard (PCG), after careful consideration of inputs from stakeholders and counterparts with vital involvement in securing the Sulu-Celebes Seas maritime security measure, recommends the downgrading of the threat on the 'Abduction of Crew for ransom in the Sulu-Celebes Seas' from 'POTENTIALLY HIGH' to 'MODERATE'. The MODERATE threat level implies that '**Incidents are possible to occur but are relatively less severe in nature**'.

Update of ReCAAP ISC Advisory

- As the threat of abduction of crew in the Sulu-Celebes Seas has diminished since January 2020 due to successful military operations and robust law enforcement initiatives, the ReCAAP ISC updates its Advisory to all ships to **consider re-route from the area as an option based on its prerogative**.
- For ships transiting the area, the **ship masters and crew are strongly encouraged to exercise extra vigilance and report** all incidents immediately to the Operation Centres of the Philippines and Eastern Sabah Security Command (ESSCOM) of Malaysia. The **Contact Details** of the Operation Centres of the Philippines and ESSCOM of Malaysia are as shown in Picture 1.



RECOMMENDATIONS

Ship master and crew are to report all incidents of piracy and armed robbery against ships to the nearest coastal State and flag State, referring to the Poster on the *Contact Details for Reporting of Incidents of Piracy and Armed Robbery against Ships in Asia*, exercise vigilance and adopt appropriate preventive measures taking reference from the *Regional Guide 2 to Counter Piracy and Armed Robbery Against Ships in Asia*.

Follow us on:	W: www.recaap.org	Twitter: @recaapisc	Linkedin: https://www.linkedin.com/company/recaap-information-sharing-centre
Contact us at:	E: info@recaap.org	T: +65 6376 3063	F: +65 6376 3066

* Table at <https://www.recaap.org/resources/ck/files/Number%20of%20Incidents/2023/List%20of%20Incidents%20for%202023.pdf> for details of the incidents.

¹ **CAT (Category) 2** incident is moderately significant. Under this category, the perpetrators are likely to be armed with knives/machetes and in some incidents armed with guns. The crew is threatened or held hostage temporarily and, in some cases, the crew suffered injury and physical violence.

² **CAT (Category) 3** incident is 'less significant' in nature. Under this category, the perpetrators are armed with knives/machetes or other items such as sticks or rods. Although the crew can be subjected to duress or threat during the incident, they are not harmed physically. In most CAT 3 cases, nothing is stolen. In cases where losses are reported, stores and engine spares are commonly stolen items.